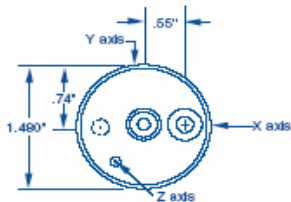


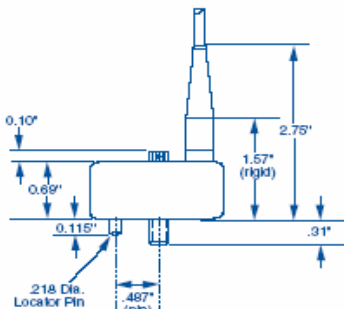


FEATURES:

- Rugged design
- Hermetic
- Broad Frequency Response
- Easy to mount
- EMI/RFI protection
- ESD protection
- Reverse wire protection
- Low Noise
- Low weight



Top View



Side View

Model 993B Series

Premium. Triaxial Accelerometers

| | 993B-5 | 993B-6 | 993B-7 |
|---|------------------------------------|------------------------------|------------|
| DYNAMIC | | | |
| Sensitivity, ±10%, 25°C | 25 mV/g | 50 mV/g | 100 mV/g |
| Acceleration Range | 150 g peak | 75 g peak | 40 g peak |
| Amplitude Nonlinearity | 1% | | |
| Frequency Response: | | | |
| Z Axis ±3 dB | 2 - 10,000 Hz | — | — |
| X & Y Axis ±3 dB | 2 - 7,000 Hz | — | — |
| Transverse Sensitivity, max. | 7% of axial | — | — |
| Temperature Response | -50°C | -10% | |
| | +120°C | +15% | |
| ELECTRICAL | | | |
| Power Requirement: voltage source | 18 - 30 VDC | — | — |
| current regulating diode | 2 - 5 mA | — | — |
| Electrical Noise, equiv. g: | | | |
| Broadband 2.5 Hz to 25 kHz | 336 µg | 220 µg | 160 µg |
| Spectral 10 Hz | 24 µg/√Hz | 15 µg/√Hz | 10 µg/√Hz |
| 100 Hz | 3.2 µg/√Hz | 2.0 µg/√Hz | 1.4 µg/√Hz |
| 1000 Hz | 2 µg/√Hz | 1.1 µg/√Hz | 1.0 µg/√Hz |
| Output Impedance, max. | 400 Ω | — | — |
| Bias Output Voltage | 11 VDC | — | — |
| Grounding | case isolated, internally shielded | | |
| ENVIRONMENTAL | | | |
| Temperature Range | -50 to 120°C | | |
| Vibration Limit | 500 g peak | | |
| Shock Limit | 5,000 g peak | | |
| Electromagnetic Sensitivity, equiv. g. | 100 µg/gauss | | |
| Sealing | Hermetic | | |
| Base Strain Sensitivity, max. | 0.0005 g/µstrain | | |
| Hydrostatic Pressure, max. | 100 psi | | |
| PHYSICAL | | | |
| Sensing Element Design | PZT ceramic / shear | | |
| Weight | 134 grams | | |
| Case Material | 316L stainless steel | | |
| Mounting | 1/4 - 28 captive screw | | |
| Mating Connector | Not applicable | | |
| Integral Cabling | J12, 16 ft. | | |
| FUNCTION | | CABLE CONDUCTOR COLOR | |
| axis X, power / signal | | Green | |
| axis Y, power / signal | | Red | |
| axis Z, power / signal | | White | |
| common (all channels) | | Black | |
| N/C | | Shield | |

ACCESSORIES SUPPLIED:

1/4-28 captive screw (International customers specify mounting requirements); Calibration data (level 3).

OPTIONS:

3 Conductor, shielded cable is supplied with CSA intrinsically safe model.

